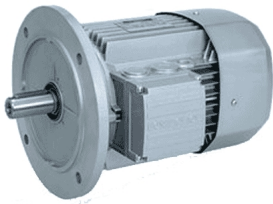


New range of high efficiency AC motors IE2 class



The IEC-normalized BE motors comply with IEC 60034- 30:2008 (efficiency classes) and all the applicable international standards, including the EMC and LV Directives.

They are available in the 0.75 - 22 kW range in the foot and the flange mounting version, the latter in both the IM B5 and the IM B14 configuration. Single pole version available with generally, two brake options offered, one DC and one AC supply, lending further flexibility to the system. Finally, all motors are inverter duty.

Type 4 poles	Power kW
BE 80B	0.75
BE 90S	1.1
BE 90LA	1.5
BE 100LA	2.2
BE 100LB	3
BE 112M	4
BE 132S	5.5
BE 132MA	7.5
BE 132MB	9.2
BE 160M	11
BE 160L	15
BE 180M	18.5
BE 180L	22

Technical data

Power Range (4 pole)

0.75 kW ... 22 kW

Frame Sizes

80B ... 180L

Pole Numbers

2, 4, 6

Mounting Options

Foot IM B3

Flange IM B5 and IM B14

Operation

50 Hz e 60 Hz

Compliance

IEC 60034-30:2008 (IE),

2006/95/EC (LVD) and 2004/108/EC (EMC)

Inverter Duty

All frame sizes

Housing

Cast aluminium

Main Brake Features

DC and AC supply

Faster brake engage/disengage through electronically

Controlled AC/DC rectifier type SB, NBR, SBR (options)

Main Options

Thermistors and thermostates sensors

Separate supply forced ventilation

Line driver and push-pull incremental encoder

CSA and UL approved design

Downloads



[Catalog](#)



[Manual](#)

