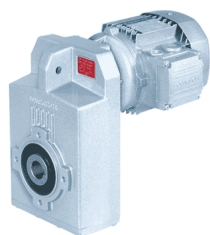


Ruggedness and effectiveness to the state-of-the-art



No better, easier and neater installation than with a shaft mounted unit of the F series. Lightweight and performing, an F unit is the dependable drive for all the material handling applications.

| Type | Torque Nm |
|------|-----------|
| F 10 | 140 |
| F 20 | 250 |
| F 25 | 400 |
| F 31 | 600 |
| F 41 | 1.100 |
| F 51 | 1.800 |
| F 60 | 2.900 |
| F 70 | 5.000 |
| F 80 | 8.000 |
| F 90 | 14.000 |

Technical data

Torque Range

140 Nm... 14.000 Nm

Mechanical Rating ($n_1 = 1400 \text{ min}^{-1}$)

0,17 ... 125 kW

Gear ratios

6,4 ... 2099

Output Configuration

Keyed Hollow Shaft - Two Bore Options per Size

Keyless Shrink Disc Fitting

Plug-in Solid Output Shafts as an Option

Input Configurations

IEC-normalized Motor Adaptors

Solid Input Shaft

Applicable AC motors

Integral motors and Brake motors - M series/ME series

IEC-normalized Motors and Brake motors - BN series/BE series

Single and Dual Speed Motors

Main Brake Features

DC and AC supply

Faster Brake Engage/Disengage through Electronically

Controlled AC/DC Rectifier type SB, NBR, SBR (options)

Main Motor Options

Thermistors and Thermostates sensor

Separate Supply Forced Ventilation

Line Driver and Push-Pull Incremental Encoder

Downloads



[Catalog](#)



[Manual](#)



[Part List](#)